



Gets you there.

LONGRUNNER EXTENDIBLE FLATBED TRAILERS



INNOVATION THAT GETS YOU THERE

Of course all technology brands have to innovate. But we don't just innovate for the sake of it. We innovate to create groundbreaking developments. Developments that make our trailers the best in the market. That's why our trailers offer the widest range of possibilities, supreme manoeuvrability, the lowest costs possible and maximum reliability. We believe that our customers, and the customers of our customers, deserve a smooth and successful operation of their abnormal transports. Each and every day. Our latest innovation is the TELETRAILER LONGRUNNER. A new generation of lightweight, extendible flatbed trailers. And true to its name the LONGRUNNER is ideal for the transport of self-supporting long loads over long distances, with the lowest running costs over the longer term.

Nootboom. Gets you there.





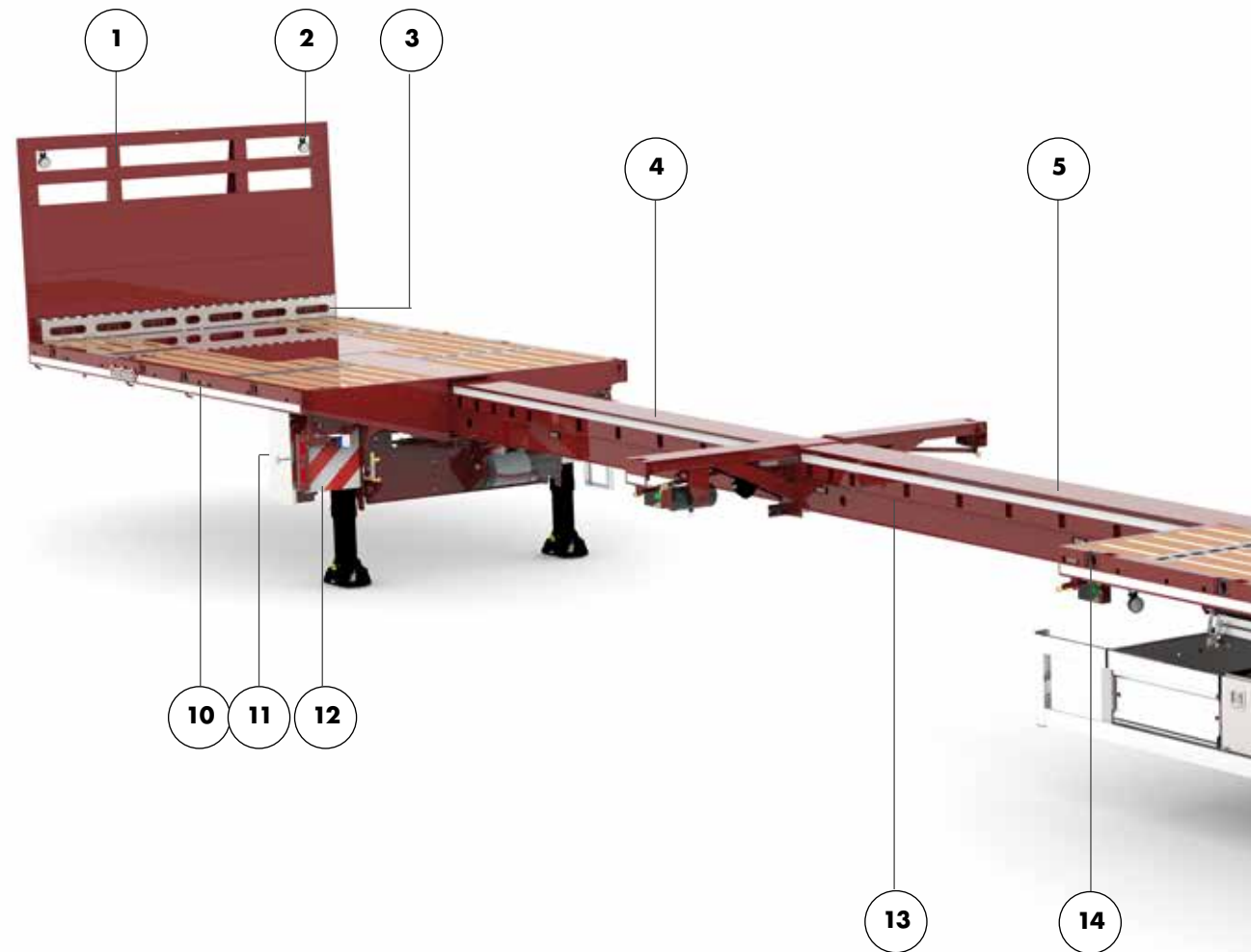
Advantages TELETRAILER LONGRUNNER

The TELETRAILER LONGRUNNER is the latest generation of lightweight, extendible flatbed Nootboom trailers. Available with 2 or 3 hydraulically steered axles and with a single or double extendible load floor, extendible up to a maximum length of 30m. The LONGRUNNER is particularly suitable for the transport of long self-supporting loads, such as steel and concrete structures but also ideal for the transport of containers. The latest Nootboom LONGRUNNER contributes to maximum transport efficiency and minimum running costs.

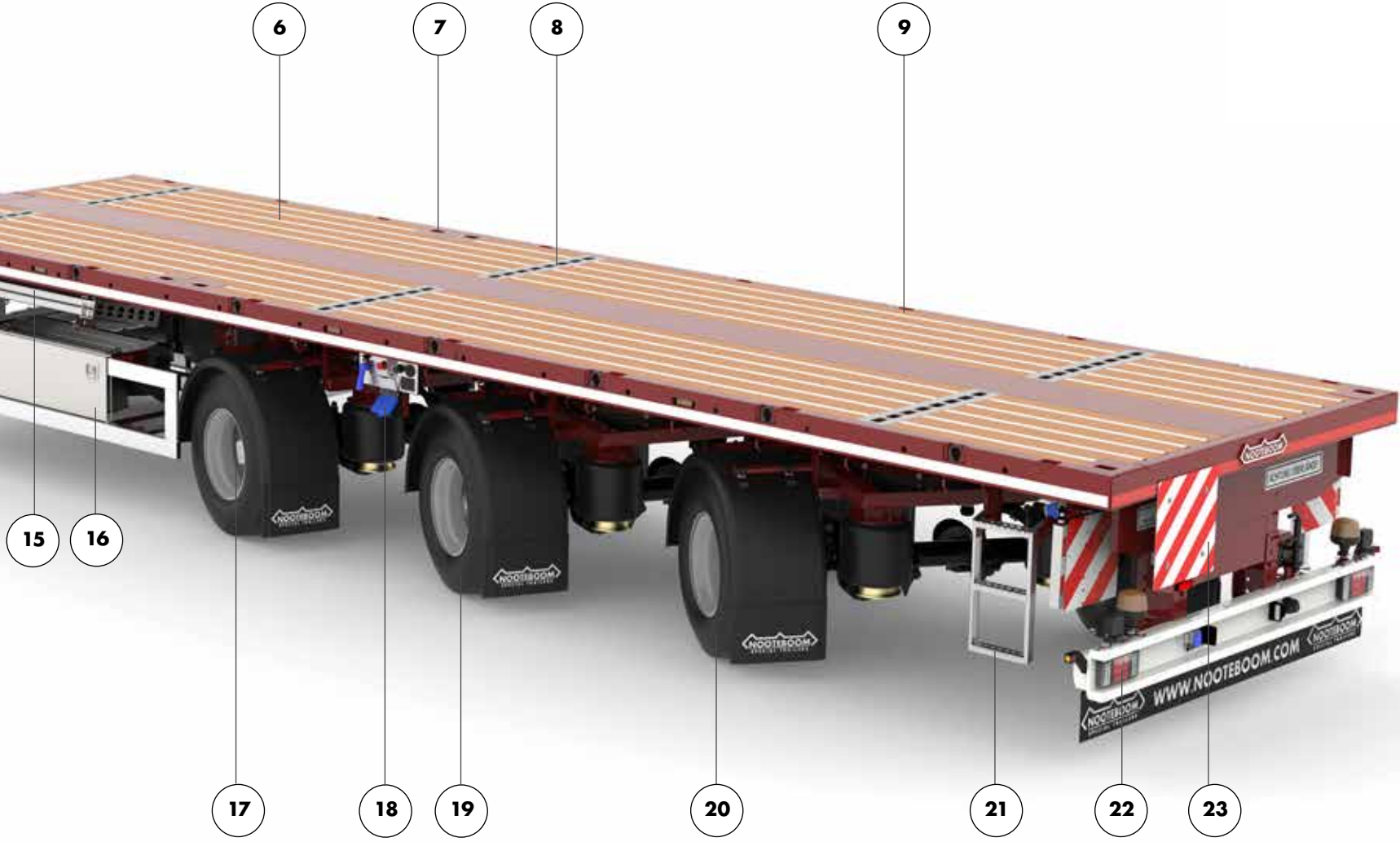
- Single and double extendible (max. 30m)
- TÜV certified head board in 14 versions
- Electronic air suspension with smartboard control
- Excellent manoeuvrability due to hydraulic turntable steering
- Hydraulically steered axles including manual steering
- Lightweight chassis due to the use of high-grade steel
- Load floor height from 1.145 m
- Standard equipped with 10t axles
- Fifth wheel load 19t or 23t
- Available with many different tyre types
- Dead weight from 7.300kg

Gets you there.

- ① TÜV Headboard (9 variants available)
- ② LED work lights
- ③ Stake-storage
- ④ Precambering of the loading platform and extension beams
- ⑤ Extendible platform (single or double)
- ⑥ Hardwood floor with omega profiles
- ⑦ Twistlocks for 20'and 40'containers
- ⑧ Crossrow stakepockets for load securing
- ⑨ Stake pockets in the side raves
- ⑩ Flashing LED side marker lamps
- ⑪ Hydraulic steering with control box
- ⑫ Extendible width marker signs with LED lights
- ⑬ Chassis fully hot zinc sprayed
- ⑭ 8t TÜV certified droprings (LC=8000 daN)
- ⑮ Stake-storage
- ⑯ Lockable stainless steel toolbox
- ⑰ SAF or BPW axles (disc brakes optional)
- ⑱ Air suspension with control unit (optional liftaxle + smartboard)
- ⑲ Different types of tires (single or twin mounting)
- ⑳ Hydraulically powersteered axles
- ㉑ Adjustable ladder
- ㉒ Hella EasyCon illumination system (light bulb taillights optional)
- ㉓ Extendible overlength marker sign with LED lamp



TELETRAILER LONGRUNNER



Gets you there.



Programm TELETRAILER LONGRUNNER

Type	Fifth wheel	Axle load	Total weight	Dead weight	Payload	Length retracted/extended
TELE-39-02V	19.0	2x10.0	39.0	7.3	31.7	11.700 - 17.700

Type	Fifth wheel	Axle load	Total weight	Dead weight	Payload	Length retracted/extended
TELE-49-03V	19.0	3x10.0	49.0	9.0	40.0	13.500 - 21.500
TELE-53-03V	23.0	3x10.0	53.0	9.3	42.5	13.500 - 21.500

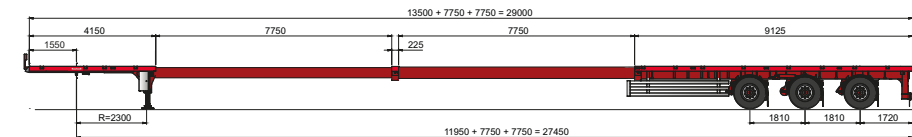
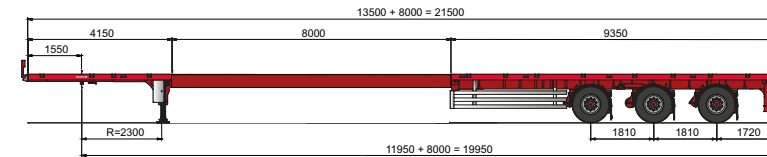
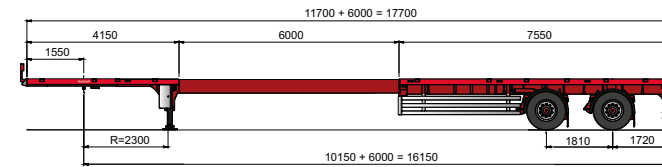
Type	Fifth wheel	Axle load	Total weight	Dead weight	Payload	Length retracted/extended
TELE-49-03V(V)	19.0	3x10.0	49.0	10.5	39.7	13.500 - 29.225
TELE-53-03V(V)	23.0	3x10.0	53.0	10.9	42.1	13.500 - 29.225

Dimensions in mm, weights in tonnes at 80 km/h.

Tire types LONGRUNNER

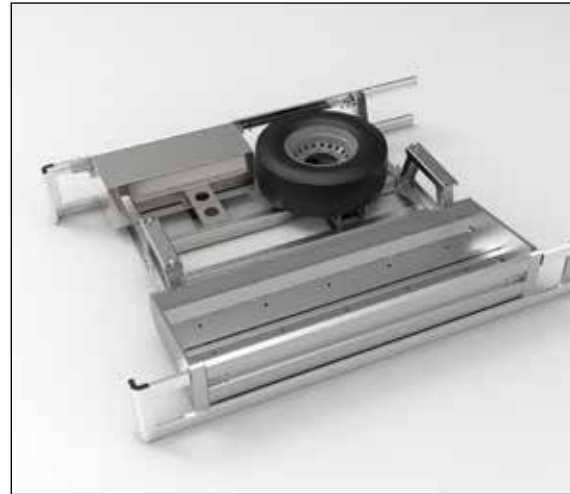
Tire	Mounting	Axle load	Axles	Brakes	Lood floor height	Travel suspension
385/65R22.5	Single	10t	SAF/BPW	Drum/Disc	from 1.356	-80/+160
275/70R22.5	Twin	10t	SAF/BPW	Trommel	from 1.358	-80/+160
435/50R19.5	Single	10t	SAF/BPW	Trommel/Schijf	from 1.219	-80/+160
245/75R17.5	Twin	10t	SAF/BPW	Trommel	from 1.145	-80/+160

Dimensions in mm, weights in tonnes. Lood floor height in ride height.

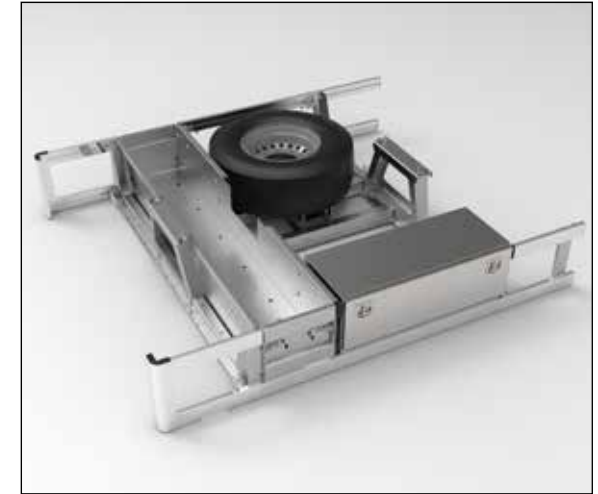


STORAGE BOXES & TOOL BOXES

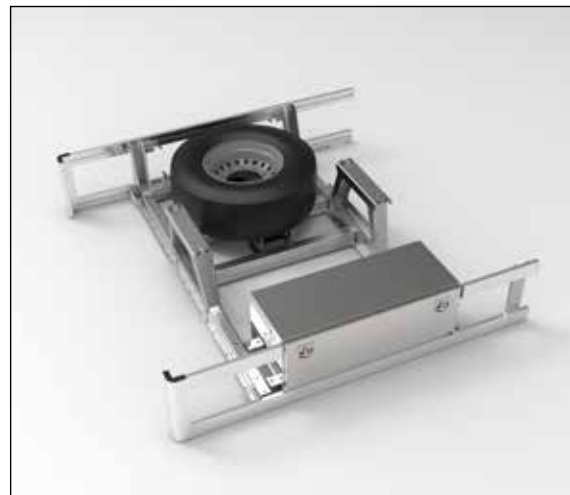
For the safe and easy storage of e.g. wheel chocks and loose materials Nootboom provides various storage options such as open storage boxes and lockable stainless steel tool boxes. These are mounted underneath the load floor as a substructure. This substructure is available in different sizes, depending on the trailer type and load floor length. The customer can select the size and then choose himself where the open storage box, toolbox and/or spare wheel are positioned. The table and drawings denote the type of substructures available and the combinations that can be selected.



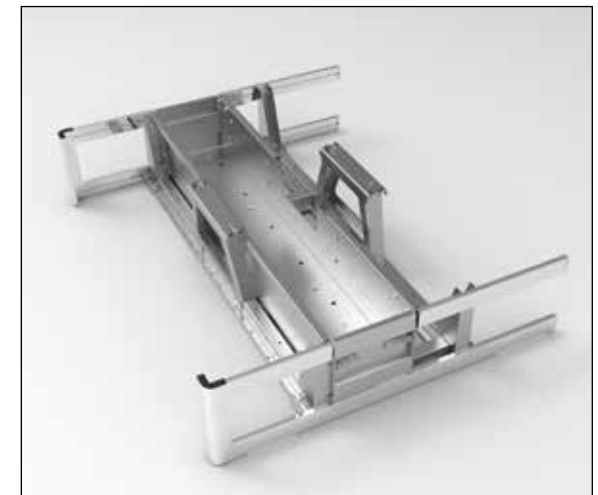
Standard load floor length



Load floor length -450mm



Load floor length -900mm



Load floor length -1350mm

OVERVIEW STORAGE BOXES & TOOL BOXES SIZES

	Length	Width	Height
Open storage box left/right	2.570mm	900mm	410mm
	2.120mm	900mm	410mm
	1.670mm	900mm	410mm
Open storage box transversal	980mm	2.440mm	380mm
	530mm	2.440mm	380mm
RVS tool box	1.200mm	500mm	400mm
Spare wheel carrier	(Depends on the tyre size)		



TÜV CERTIFIED HEAD BOARD

For the LONGRUNNER Nooteboom has developed a completely new TÜV-certified head board in 9 versions. These headboards meet the highest standards in the market (NEN-EN 12642 code XL) and are strong enough to stop at least 50% of the load capacity, up to a maximum of 25 tonnes against the head board. Safety first!



HEIGHT DIMENSIONS HEAD BOARD

Closed	Lattice	Total
1.000mm	-	1.000mm
1.500mm	-	1.500mm
2.000mm	-	2.000mm
2.500mm	-	2.500mm

HEIGHT DIMENSIONS HEAD BOARD

Closed	Lattice	Total
1.000mm	500mm	1.500mm
1.500mm	250mm	1.750mm
1.500mm	500mm	2.000mm
2.000mm	250mm	2.250mm
2.000mm	500mm	2.500mm



FLASHING SIDE-MARKER LIGHTS

The LONGRUNNER is equipped with LED side-marker lights in the side rave as standard and optionally they can be fitted on the extensions too. The rear side-marker lights operate synchronously with the flashing beacon and contribute to increased road safety. Here Nootboom is anticipating future regulations regarding side-marker lights.



AXLES & BRAKE SYSTEM

The TELETRAILER LONGRUNNER is available with various tyre sizes in combination with SAF or BPW axles. The trailer is equipped with drum brakes as standard, disc brakes can be fitted as option if preferred.



CONTROL PANEL AIR SUSPENSION

The LONGRUNNER is equipped with electronic air suspension with a manual control lever as standard. A Wabco lift axle control or Wabco smartboard are available as option. With the smartboard various functions can be controlled, such as raise/lower, axle loads readings, setting 2nd ride height, odometer and operating a lift axle.



STAKE STORAGE

For the storage of stakes the Longrunner can be fitted with a removable galvanised stake storage unit against the rear of the head board. A maximum of 26 stakes can be stored here in vertical position. Alternatively a stake storage unit can be mounted underneath the load floor on the left and right hand side.



HYDRAULICALLY STEERED AXLES

The LONGRUNNER is as standard equipped with hydraulically steered axles, including manual steering and the ASA alignment system. Thanks to the large steering angle of more than 50 degrees, the LONGRUNNER offers more transport efficiency, less tyre wear and excellent manoeuvrability.



LENGTH MARKER PLATE

To mark an overhanging load the LONGRUNNER can be equipped with a pull-out, detachable length marker plate with LED light. The length marker can be pulled out to a length of approx. 2.500mm.

Nootboom Trailers B.V.

Nieuweweg 190, 6603 BV Wijchen, Nederland
Tel. +31 24 6488864, E-mail info@nootboom.com
www.nootboom.com



Gets you there.